

# FS-4000DN

A4 MONOCHROME WORKGROUP PRINTER

► print ► copy ► scan ► fax

## SPACE TO THINK AT HIGH SPEED.

This extremely fast new generation A4 printer allows larger workgroups to increase productivity with ease and accommodates additional memory for improved performance with large print files. A space saving internal duplex unit and network connectivity are standard. Low noise, compact design and cost-effective ECOSYS technology give you space to think faster than the competition.

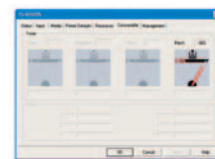
- 45 pages per minute with 1,200 dpi
- 128 MB memory standard, upgradeable to 640 MB
- PDF direct printing from USB Flash Memory devices
- Eco-friendly, ozone-free technology
- Long-life components and easy maintenance
- Network connectivity and powerful CPU as standard

Product depicted includes optional extras



Add up to 3 additional paper cassettes to upgrade input capacity to 2,100 sheets.

Take the guesswork out of how much toner is left with an intelligent toner level monitor.



*ECOSYS*<sup>®</sup>

 **KYOCERA**

# FS-4000DN

## A4 MONOCHROME WORKGROUP PRINTER



ECOSYS devices are designed to minimise both direct costs and indirect costs, such as maintenance, administration and consumables. The cartridge-free system requires only the toner to be replaced. The modular design concept allows you to add workflow-enhancing functions and a wide variety of paper handling capabilities as required. Integrated system software provides long-term cross-network compatibility. Kyocera's long-life components cost you and the environment less.

### GENERAL

**Technology:** Kyocera ECOSYS, Laser  
**Engine speed:** Up to 45 pages per minute A4 simplex  
Up to 33.5 pages per minute A4 duplex (16.75 sheets)  
**Resolution:** 1,200 dpi  
**Time to first page:** 9 seconds or less  
**Warm-up time:** 17 seconds or less from power on  
**Duty cycle:** Max. 250,000 pages per month,  
max. average 30,000 pages per month  
**Power source:** AC 220 ~ 240 V, 50/60 Hz  
**Power consumption:** Printing: 510 W, Stand-by: 10 W,  
Power-Saving (ECOpower): 5.5 W  
**Noise (ISO 7779):** Printing: 56 dB(A), Stand-by: 30 dB(A),  
Power-Saving (ECOpower): immeasurably low  
**Dimensions (W x D x H):** Main unit: 382 x 394 x 320 mm  
**Weight:** Main unit: Approx. 16.8 kg  
**Certifications:** TÜV/GS, CE, PTS  
This product is manufactured according to ISO 9001 quality standard and ISO 14001 environmental standard.

### PAPER HANDLING

All paper capacities quoted are based on a paper thickness of max. 0.11 mm. Please use paper recommended by Kyocera under normal environmental conditions.

**Input capacity:** 500-sheet universal paper cassette, 60-120 g/m<sup>2</sup>, A4, A5, A6, B5, Letter, Legal, Custom (148 x 210 mm to 216 x 356 mm)  
100-sheet multi-purpose tray, 60-220 g/m<sup>2</sup>, A4, A5, A6, B5, Letter, Legal, Custom (70 x 148 mm to 216 x 356 mm)  
Max. input capacity with optional paper feeder PF-315: 2,500 sheets  
Duplex as standard supports A4, A5, B5, Letter, Legal, 60-120 g/m<sup>2</sup>  
**Output capacity:** 500 sheets face-down with paper full sensor and optional 250 sheets face-up with PT-310

### CONTROLLER

**Processor:** PowerPC 750 / 500 MHz  
**Memory:** Standard 128 MB + ECOMemory, max. 640 MB  
**Emulations:** PCL6/PCL5e incl. PJI, KPDL 3 (PostScript 3 compatible), PDF direct print, Line Printer, IBM Proprinter X24E, Epson LQ-850, Diablo 630  
**Controller language:** PRESCRIBE IIe  
**Fonts:** 80 outline fonts accessible in all emulations, 1 bitmap font, 45 types of one-dimensional barcodes plus two-dimensional barcode PDF-417, Downloadable fonts: Kyocera, PCL + TrueType format, Type 1 + 3 format  
**Print features:** Duplex, Accounting, PDF direct printing, eMPS, low noise, no Ozone, USB-Host

Your Kyocera Business Partner:

### System platform:

The FS-4000DN offers USB, parallel and network connectivity as standard and delivers problem-free system administration. Kyocera's single platform technology means that the same driver can be used for every Kyocera PCL/PostScript print device on the network; from single-user desktop printers to high-end multifunctional systems. Only Kyocera offers this effortless combination of IT sophistication and high-performance paper handling expertise.

### PRESCRIBE IIe:

With the Kyocera page design and control language PRESCRIBE IIe, even complex graphics, logos and forms (even multipart forms) can be created independently of the system and saved and updated in the printer. Consequently, integration into print files no longer applies. They are only accessed as required and therefore relieve the load on the network.

### KM-NET for Client/KM-NET Viewer:

The settings of all printers on the network can be checked visually and amended from any Windows® PC. KM-NET for Client enables easy setup and monitoring of the printer status via parallel, USB or network connection. KM-NET Viewer is an advanced printer management software tool using the standardized protocol SNMP.

### INTERFACES

**Standard interface:** High speed bi-directional parallel (IEEE 1284), USB 2.0 (Hi-Speed), Fast Ethernet 10Base-T/100Base-TX, USB Host Interface dedicated for USB Flash Memory device, KUJO-LV option interface slot  
**Multiple interface connection (MIC):** Allows simultaneous data transfer via up to four interfaces, with each interface having its own virtual printer.

### OPTIONS

**Paper handling**  
**PF-310 Paper feeder (max. 3 units):** 500 sheets, 60-120 g/m<sup>2</sup>, A4, A5, B5, Letter, Legal, Custom (148 x 210 mm to 216 x 356 mm)  
**CB-310 Printer cabinet:** Desk with storage capacity  
**PT-310 Paper tray:** 250 sheets face-up output tray  
**PF-315 Bulk paper feeder:** 2,000 sheets (requires PB-315), not to be combined with PF-310 or EF-310  
**PB-315 Printer base:** For use with PF-315  
**EF-310 Envelope feeder:** For max. 70 normal envelopes or max. 100 air mail envelopes up to A6 size

### Memory

**Printer memory:** 1 DDR SDRAM DIMM slot (64, 128, 256 or 512 MB)  
**Storage memory:** 1 slot for either CompactFlash® memory card type 1 (up to 2 GB) for forms, fonts, logos, macro storage or Microdrive™ (up to 4 GB) for forms, fonts, logos, macro storage as well as document management with eMPS functions such as quick copy, proof and hold, private print and job storage.  
1 USB Host Interface (USB 1.1) for USB Flash Memory device supports PDF direct printing

### Optional interface

**IB-21E Network card:** 10Base-T/100Base-TX  
**SB-50 Network card:** 10Base-FL, FibreLink  
**SB-60 Network card:** TokenRing STP/UTP  
**SB-70 Network card:** Wireless LAN – IEEE 802.11b  
**SB-110FX Network card:** 10Base-T/100Base-TX/100Base-FX, FibreOptic  
**SB-140 Network card:** 10Base-2/10Base-T/100Base-TX  
**SB-80 Parallel interface:** 2nd parallel interface – IEEE 1284  
**IB-11 Serial interface:** RS-232C serial interface (max. 115.2 kbps)

### CONSUMABLES

**TK-310 Toner-kit:** Microfine toner for 12,000 pages with 5% coverage (ISO/IEC 19752)  
**TK-320 Toner-kit:** Microfine toner for 15,000 pages with 5% coverage (ISO/IEC 19752)  
**TK-330 Toner-kit:** Microfine toner for 20,000 pages with 5% coverage (ISO/IEC 19752)

Capacity of starter toner is 10,000 pages with 5% coverage (ISO/IEC 19752)

### WARRANTY

2-year warranty as standard. Kyocera guarantees the drum and developer for 3 years or 300,000 pages (whichever occurs sooner), provided each printer is used and cleaned in accordance with the service instructions.

**KYO LIFE** Up to 5-year on-site warranty extensions available for printer and options.



Select your options to suit your needs:



Paper feeder (PF-310)

Product depicted includes optional extras

Kyocera Mita Belgium nv/sa, Hermesstraat 8A, 1930 Zaventem, Tel +32 (0) 2 720.92.70, Fax +32 (0) 2 713.08.75, www.kyoceramita.be, info@kyoceramita.be

Kyocera does not warrant that any specifications mentioned will be error-free. Specifications are subject to change without notice. Information is correct at time of going to press. All other brand and product names may be registered trademarks or trademarks of their respective holders and are hereby acknowledged.

